

CR

SERIES CCD RICE COLOR SORTER

系列真彩CCD数字智能大米色选机

永祥 CR系列真彩 CCD全数字智能大米色选机是结合现代大米加工企业生产实际需要，综合永祥长期大米色选技术和经验，精心设计、制造，具有国际水平的专业大米色选机，该机采用超高分辨率彩色 CCD高速摄像机，智能化程度高、操作简单、性能卓越、功能强大、运行平稳，可以满足用户多种类型高精度大米色选，是目前国内性价比比较高的一线大米色选机，有利用户大幅提高产品等级，获得良好的经济效益。

Yongxiang CR series of true color CCD rice color sorter is a well-designed, manufactured, with the international level of professional rice color sorting machine, combined with of production needs of modern rice processing enterprises, and with Yongxiang long-term rice color sorting technology and experience. The machine adopts ultra-high resolution color CCD high-speed camera, high degree of intelligence, simple operation, excellent performance, powerful functions, smooth operation, to meet the need of variety of high-precision rice color sorting. It is the current high cost-effective first rate rice color sorter, enabling users to significantly improve the product level, to gain good economic benefits.



CR4/CR5/CR6/CR7/CR9
SERIES CCD RICE COLOR SORTER



异色粒正反选



腹白粒正反选



精白粒正反选

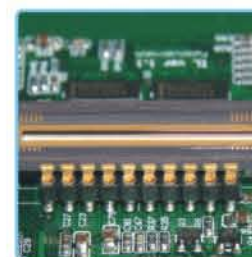


黄精同选



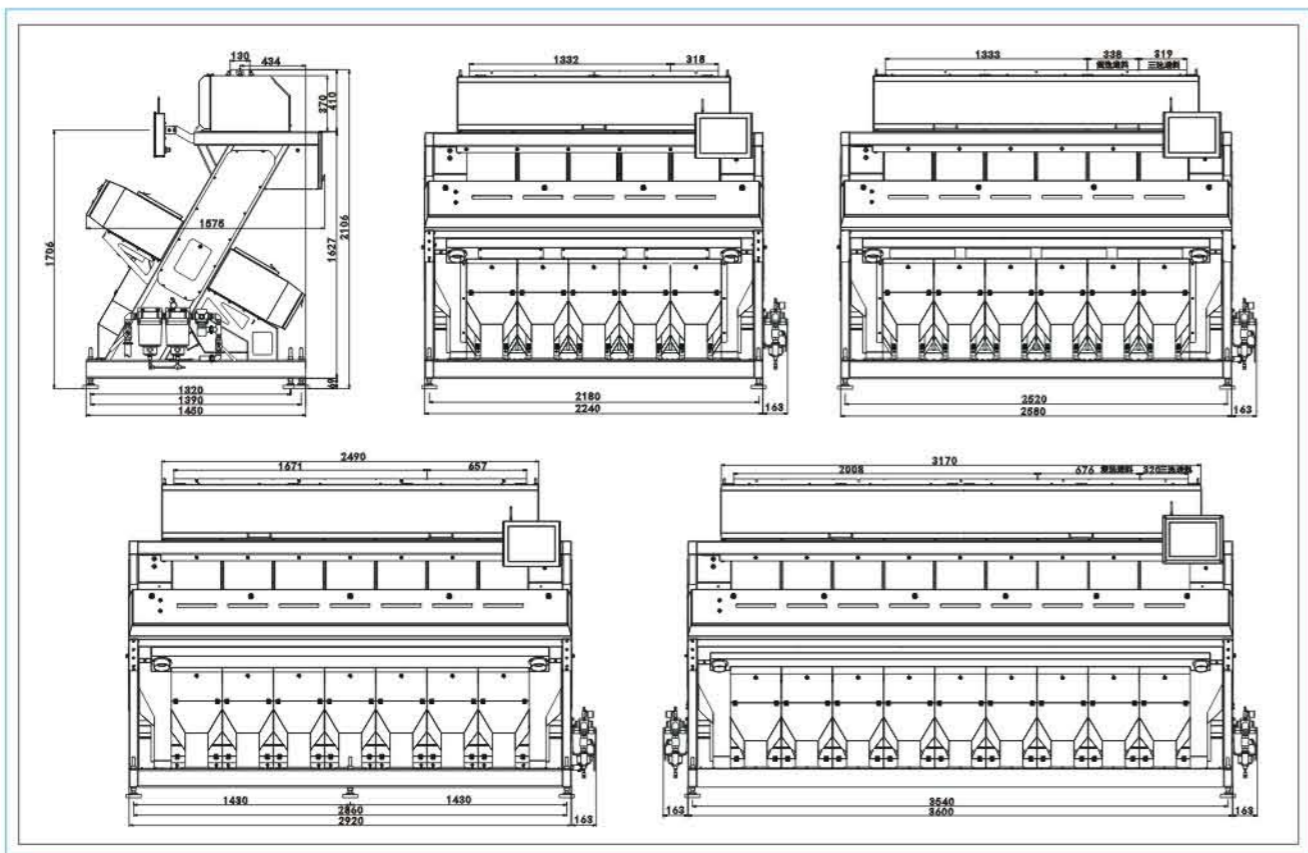
黄白同选

产品特点 FEATURES



- ▶ 采用神经网络算法，多种类多目标同时识别，智能多模块的运用，实现了对物料的自由分选组合（如自由组合剔除：浅黄、斑点、腹白、晶米和各种其他异色）。
- ▶ 采用接近自然光谱的恒亮度光源和超高分辨率CCD高速智能相机一起完美呈现物料的本色，让极浅黄，微小病斑，芯白等不良品无处可逃。
- ▶ 采用物料匹配捕捉的算法，实现精准打击，减少良品的带出，降低了耗气量。
- ▶ 高达 1500 赫兹的电磁阀寿命长，速度快，反应时间短，和先进的算法相匹配一起极大的减少了良品的带出，极大的降低了耗气量。
- ▶ 整机采用以太网组网通信，总线传输高速可靠，实现了真正实时监控的图像采集，实现看得见的色选。
- ▶ WIFI & LAN 多种方式联接云服务器；实现远程大数据分析、远程技术支持、远程升级、远程实时监控设备的运行状态、可实时在线服务。
- ▶ 一键自动调整，实现了“开机 --> 自动调整 --> 下料”简单操作的开机三部曲，且自动调整过程零流出（传统的自动调整过程需下米，容易让需剔除的物料流出）杜绝不良品混入成品。
- ▶ The use of neural network algorithm, multi-class and multi-target simultaneous identification, and the use of intelligent multi-module, achieve a free combination of sorting materials (such as free combination of removal: light yellow, spots, belly white, crystal rice and a variety of other different colors).
- ▶ Using of constant brightness light source close to the natural spectrum and ultra-high Resolution CCD high-speed smart camera perfectly show the material itself, to let very light yellow, tiny spots, core white and other rejects nowhere escape.
- ▶ Using the algorithm of material matching to capture achieves precision strike, to reduce the nondefective out, also reducing gas consumption.
- ▶ The match of eject, up to 1500 Hz, long life, fast, short response time, and advanced algorithms together greatly reduces the nondefective out, also reducing gas consumption.
- ▶ Adopting Ethernet network communication and high-speed and reliable bus transmission realize real real-time monitoring image acquisition, to achieve visible color selection.
- ▶ WIFI & LAN in a variety of ways to connect the cloud server; achieve remote large data analysis, remote technology support, remote up grade, remote real-time monitoring running status of equipment, real-time online services.
- ▶ With only one touch achieves the trilogy of simple operation: "start -> automatic adjustment -> feeding", and zero out during automatic adjustment process (during the traditional automatic adjustment process, rice is needed, so rejects easy to be mixed) to prevent rejects mixed into the finished product.

外形尺寸与地脚安装图 OVERALL DIMENSION



系列真彩CCD数字智能大米色选机

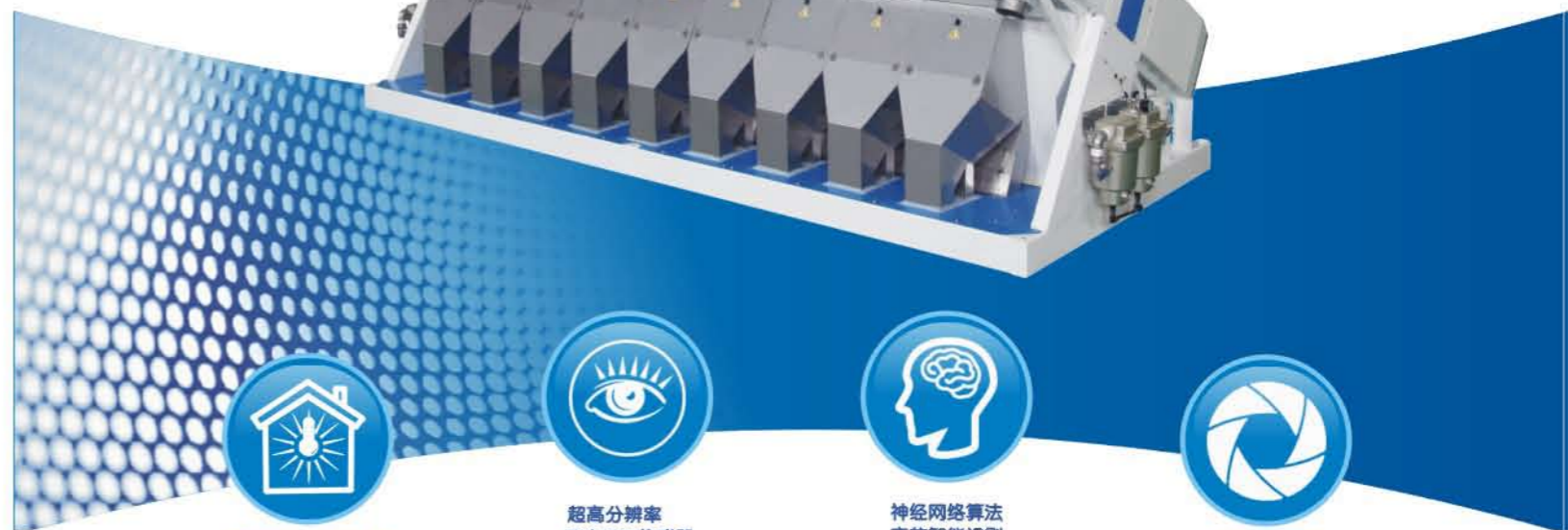
SERIES CCD RICE COLOR SORTER



主要技术参数 MAIN TECHNICAL DATA

参数 Data	型号 Model	CR4	CR5	CR6	CR7	CR9
通道数 Channels		320	400	480	560	720
处理量 Capacity(t/h)		7.8-12	9-15	10-18	13-21	15-27
色选精度 Sorting accuracy (%)		> 99.99				
二次选最带出比 Optimized carryover (bad:good)		(坏:好) > 40:1				
配备动力 Power(kW)		2.5	3.0	3.2	3.5	4.2
加热膜功率 Chutes with heater (kW)		1.0	1.3	1.5	1.8	3.2
工作电源 Input Voltage (V)		AC220V(±10%50Hz/60Hz)				
气源压力 Air pressure (MPa)		0.6-1.0				
气源消耗 Air consumption (m ³ /min)		<2	<2.5	<3	<3.5	<4.5
机器重量 Weight (Kg)		1050	1200	1310	1480	1780
外形尺寸 Dimension LxWxH(mm)		2088x1575x2756	2428x1575x2756	2768x1575x2756	3108x1575x2756	3950x1575x2756

注：三次选采用坏米中剔除好米作复选的情况下，精度可达99.9%（基本上坏米中没有好米）。
 以上表中的色选性能参数以梗米（含杂量低于2%，单通道产量为32kg/h）为例，具体指标因原粮和产量的不同有所变化。 产品技术参数如有变更恕不另行通知
 Note: The accuracy can reach 99.9% (no good rice in the bad rice) if the rice is selected in three times.
 The color selection performance parameters in the above table are as examples of japonica rice (with a low concentration of 2% and a single-channel yield of 32kg/h).
 The specific indexes vary with the original grain and yield. If technologic data has been changed without further information



高亮度低温LED光源
发光稳定
功耗低寿命长



超高分辨率
彩色CCD传感器
浅黄腹白轻松识别



神经网络算法
高效智能识别
高速精准



新型高速喷嘴
剔除精度高
带出低寿命长

通过ISO9001国际标准质量体系认证 ISO 9001-2008 Certified

E-mail: yongxiangmiji@sohu.com http://www.hbyxjl.com

地址: 湖北省安陆市府河大道2号

ADD: 2 FUHE AVE., ANLU CITY, HUBEI, CHINA

电话(TEL): 0712-5254443 5254445 5258762 传真(FAX): 0712-5254443 邮编(POSTCODE): 432600



官网二维码



微信二维码

湖北永祥粮食机械股份有限公司

HUBEI YONGXIANG FOOD PROCESSING MACHINE CO.,LTD.